

FC STANDARD

1 PC Connector (341/331 Series)

| CONNECTOR | FERRULE TYPE | BOOT TYPE | BOOT COLOR |
|--------------------------|-----------------|------------------|------------|
| 341 Preassembled 1 PC | 101 SM: 125.5µm | P Standard 3.0mm | 1 Blue |
| 331 Unassembled Key Ring | 201 MM: 127µm | N Standard 2.0mm | 2 Black |
| | | M Standard 900µm | 4 Red |
| | | J MINI 900µm | 6 Yellow |
| | | | 8 Beige |

341 - 101 - J1 ORDER CODE example



900µm Standard Boot



2.0mm Standard Boot



3.0mm Standard Boot

Features:

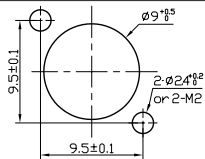
- SENKO's Standard Connector series gives the highest value for cost
- Pre-assembled one piece design and Connector Kit available
- Meets and exceeds the TIA/EIA, IEC and JIS SC Specification
- Typical IL against master to be 0.12dB Max 0.3dB
- Various boot color to meet customer need
- Crimp tool to be used CRT-401

FC ADAPTER

Square (297) and Oval (298)

| ADAPTER TYPE | SLEEVE | KEY WIDTH |
|--------------------------|---------------------------|------------------------------------|
| 297 Solid Body | 1 Zirconia Straight Split | 01 For PC Connector 2.15 +0.05/-0 |
| 298 FC Oval Adapter "HD" | 2 Metal Straight Split | 02 For APC Connector 2.05 +/- 0.02 |

297 - 101 ORDER CODE example



Mounting Hole Dimensions

FC Square, Standard Body and Oval Adapter, HD Style

Features:

- FC Square, High Density Oval and Round type available
- UPC type Adapter have Wide key of 2.15mm
- APC type Adapter have Narrow key of 2.05mm
- Typical insertion loss under 0.05dB and Max IL of 0.20dB
- High quality and durable Ni-Plated Brass body



FC Square Adapter, Solid Body



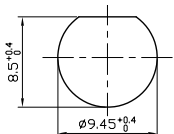
FC Oval Adapter, HD Style

FC ROUND ADAPTER

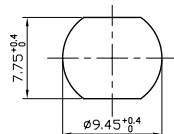
Round (253 type)

| CODE | SLEEVE | KEY WIDTH | FLANGE |
|---------------------------------|---------------------------|-----------------------------------|------------------------|
| 253 FC Round Adapter "D" & "DD" | 1 Zirconia Straight Split | 0 For PC Connector 2.15 +0.05/-0 | 3 D: Ø8.85mm x 7.95mm |
| | 2 Metal Straight Split | 2 For APC Connector 2.05 +/- 0.02 | 4 DD: Ø9.35mm x 7.65mm |

253 - 103 ORDER CODE example



FC Round Adapter D Style



FC Round Adapter DD Style

Mounting Hole Dimensions



FC Round Adapter, D Style